



Timetabling and Capacity Redesign

# Rail Freight Day

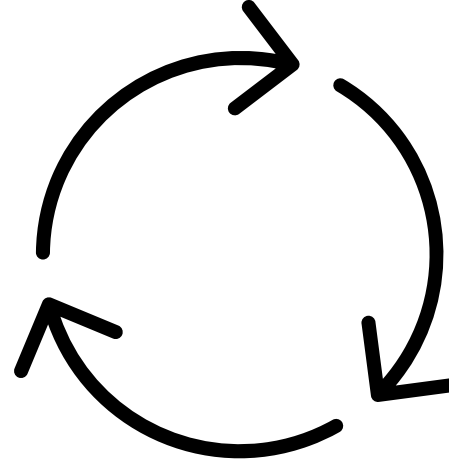


10 December 2020

# — Capacity Demands

## Freight

- Mostly long-distance
- Details often known at short notice



## Passenger

- Long and short-distance mixed
- Details known long time in advance

## TCRs

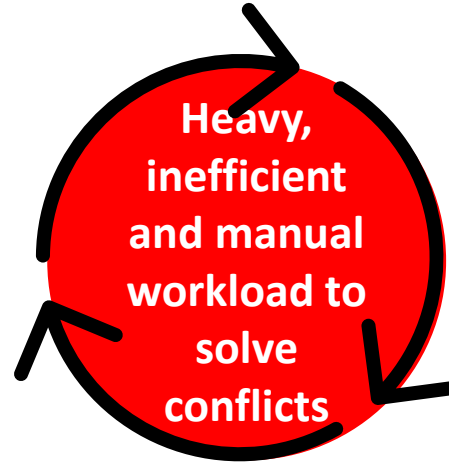
- Mostly planned locally
- Detailed planning depending on investment plans and suppliers

# — Today's Dilemma

## Freight

Prio 3

- Heavy TCR & passenger impact on origin to destination
- Re-scheduled with least priority



## Passenger

Prio 2

- Heavy TCR impact on long-distance traffic
- Increasing number of conflicts within the passenger segment
- Re-scheduled with second priority

## TCRs

Prio 1

- Scheduled late
- Highest priority
- Focus on local impact

# — Improvements with TTR

## Freight

Prio  
1

- Capacity needs safeguarded early
- Part of the requests based on capacity available for short-term demand



## Passenger

Prio  
1

- Capacity needs included in early planning
- Early offers with TCRs considered

## TCRs

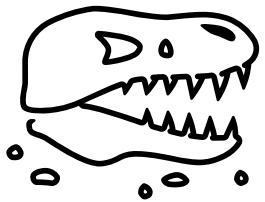
Prio  
1

- Scheduled in due time
- International impact considered

- Capacity Strategy and Models for early planning
- Involvement of stakeholders in the planning phases
- Internationally connected IT for full picture on capacity
- Availability of products for all capacity requirements, including safeguarding for later requests

# — Overcoming Obstacles

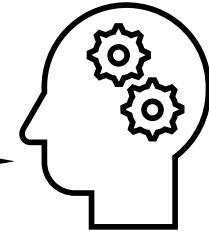
**A change of paradigm is required to become competitive**



We don't need to change!



We must change to stay relevant!



Starting point: Remove obstacles and provide incentives at European level:

- Financing digitalisation of capacity management as key precondition
- Harmonise international regulatory and legal framework

# Thank You!

Further information can be found with the following links:

- <https://ttr.rne.eu/news/new-online-ttr-brochure/> (TTR Brochure)
- [www.ttr.rne.eu](http://www.ttr.rne.eu) (summary of the TTR programme)
- [cms.rne.eu/ttr-documents](http://cms.rne.eu/ttr-documents) (complete TTR documentation)