

Commonly applicable RFC KPIs

TT2027 / TT2026 (*IN PROGRESS)



CORRIDOR MANAGEMENT

Year of publication 2026



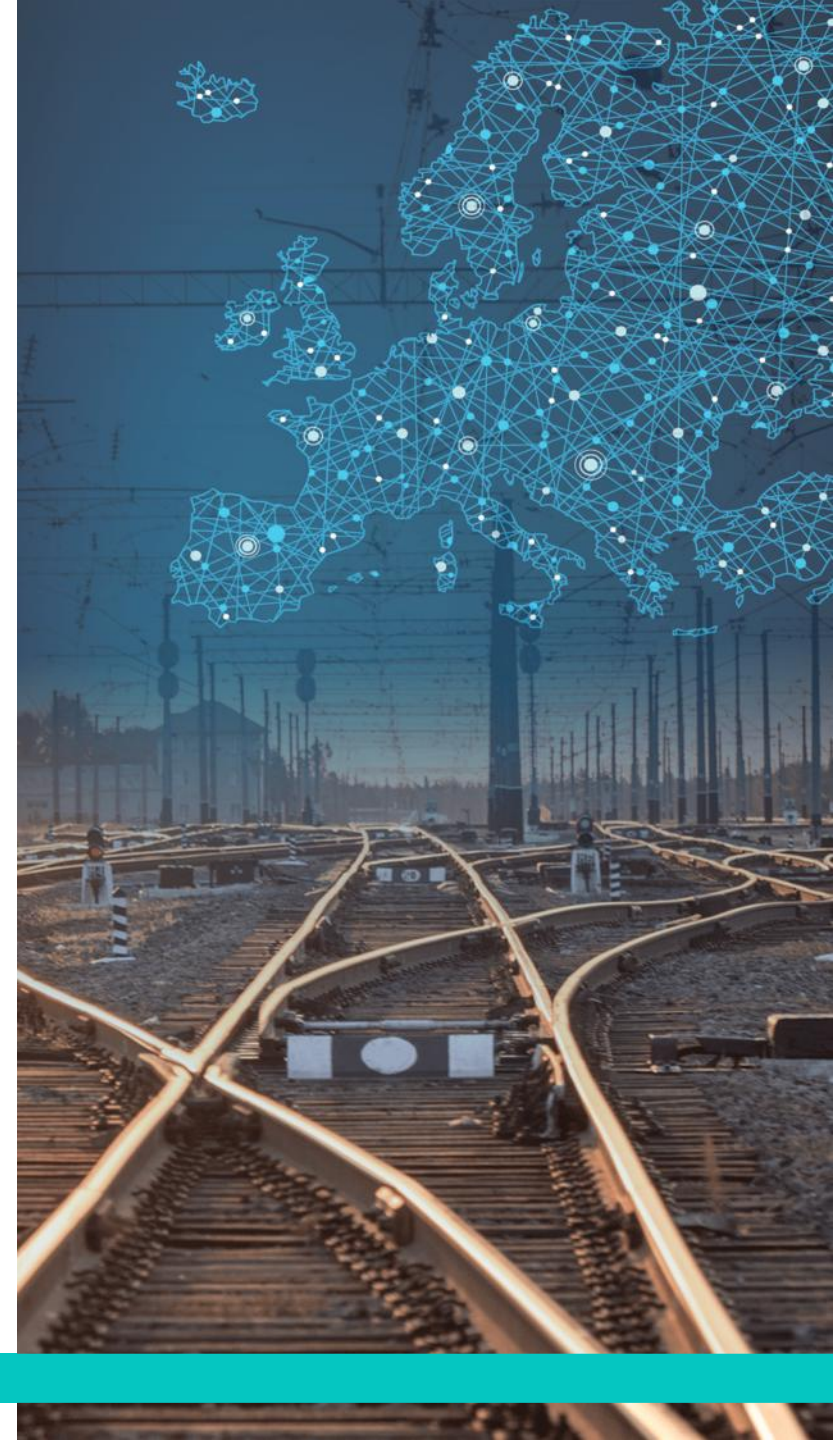
Co-funded by
the European Union

Agenda

1. CAPACITY MANAGEMENT for TT2027 & TT2026 3
2. OPERATION / MARKET DEVELOPMENT for 2025 – END OF JUNE AVAILABLE 23
3. MARKET DEVELOPMENT
for 2025 – END OF JUNE AVAILABLE 44
4. Ratio of capacity allocated by C-OSS for TT2026 70
5. DISCLAIMER 80

CORRIDOR MANAGEMENT

01 CAPACITY MANAGEMENT for TT2027 & TT2026

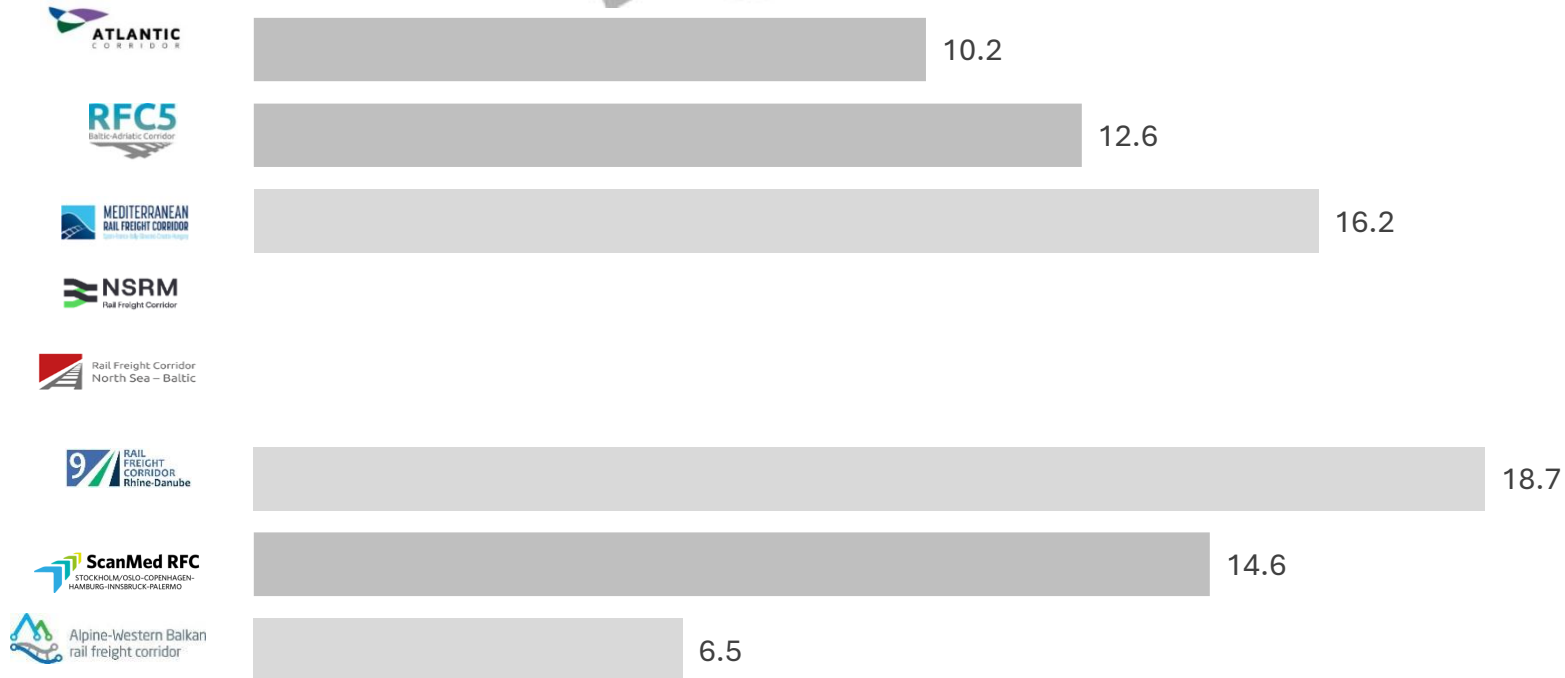


GENERAL UPDATE – TIMELINES COLLECTION OF THE KPIS

Timelines collection of the figures for TT2027 & TT2026:

- **Volume of offered capacity (PaP) TT2027** - *end of February 2026*
- **Average planned speed of PaPs TT2027** - *end of February 2026*
- **Ratio of the capacity allocated by the C-OSS and the total allocated capacity TT2026** - *By the end of February 2026*
- **Volume of requested capacity (PaPs) TT2027** – *By the end of May 2026*
- **Number of requests (PaPs) TT2027** – *By the end of May 2026*
- **Number of conflicts (PaPs) TT2027** – *By the end of May 2026*
- **Volume of pre-booked capacity (PaPs) TT2027** – *By the end of May 2026*
- **Ratio of pre-booked capacity (PaPs) TT2027** - *By the end of May 2026*
- **Volume of offered capacity – Reserved Capacity TT2027** - *By 15 December 2026*
- **Volume of requested capacity – Reserved Capacity TT2026** - *By 15 December 2026*
- **Number of requests - Reserved Capacity TT2026** - *By 15 December 2026*

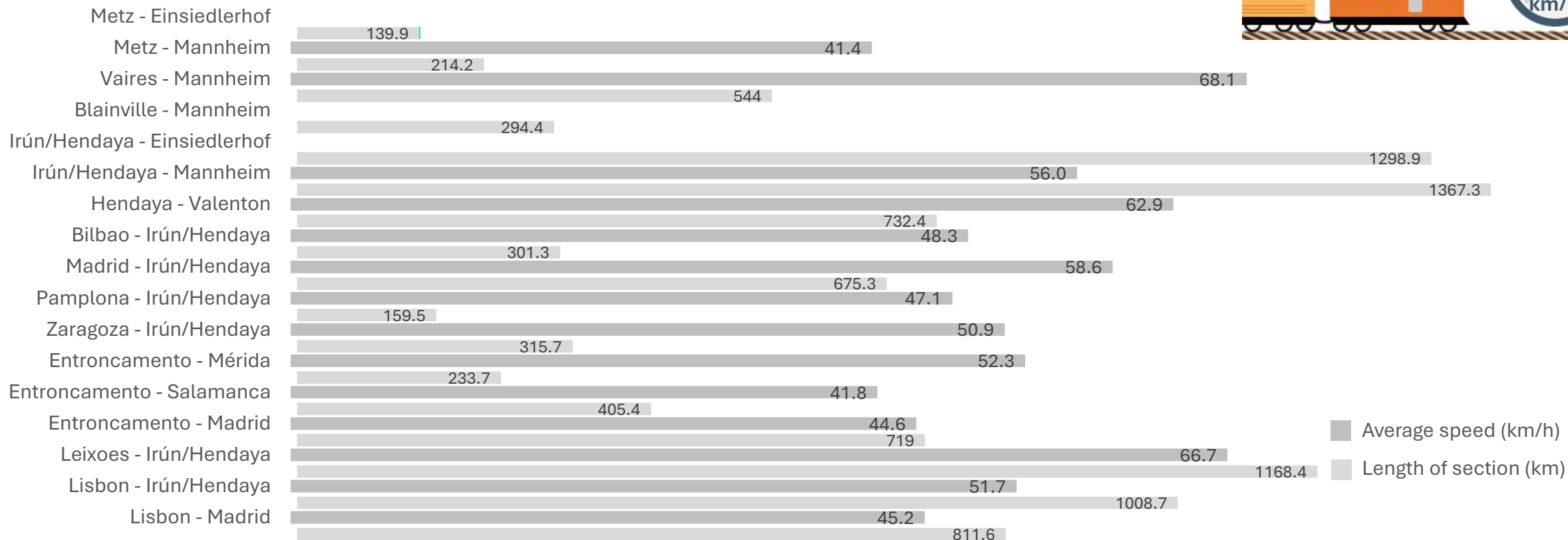
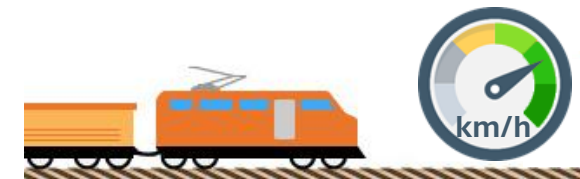
Volume of offered capacity – PaPs (at X-11) (millions of path kilometers)



For TT 2027

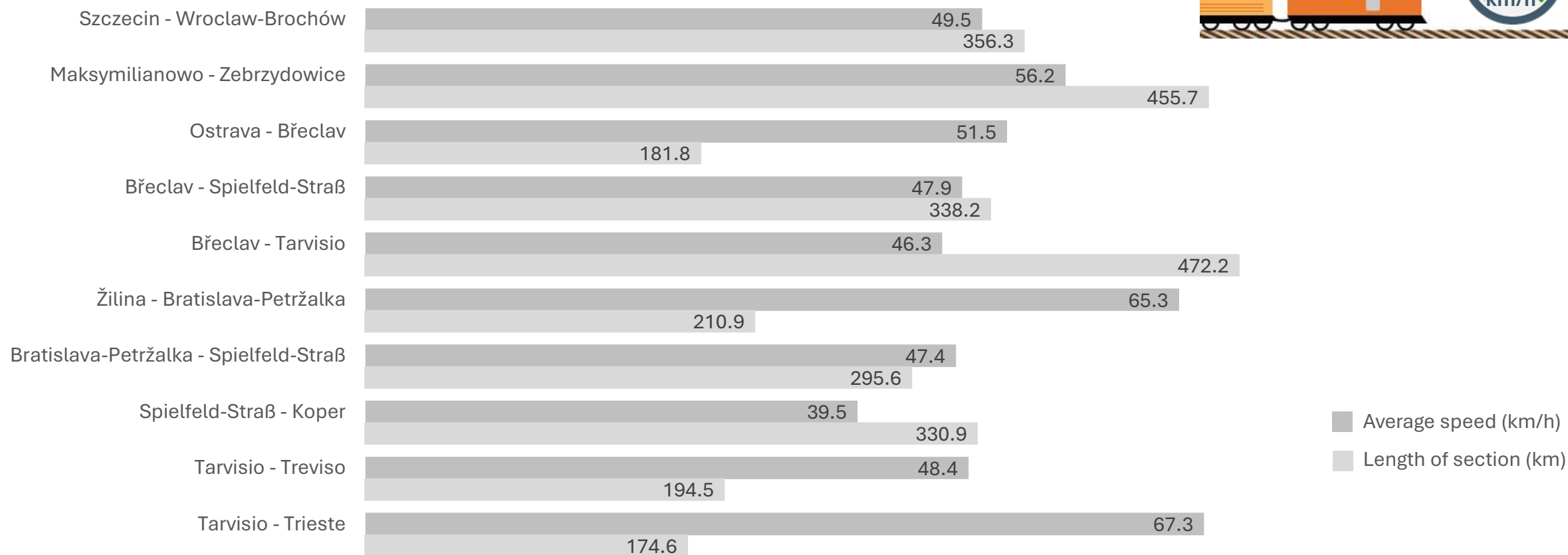
**The figures refer to the capacity which the C-OSS of the RFC concerned publishes. These might therefore not reflect the total amount of offered along the RFC.*

Average planned speed of PaPs for TT 2027 (calculation per O/D pairs)



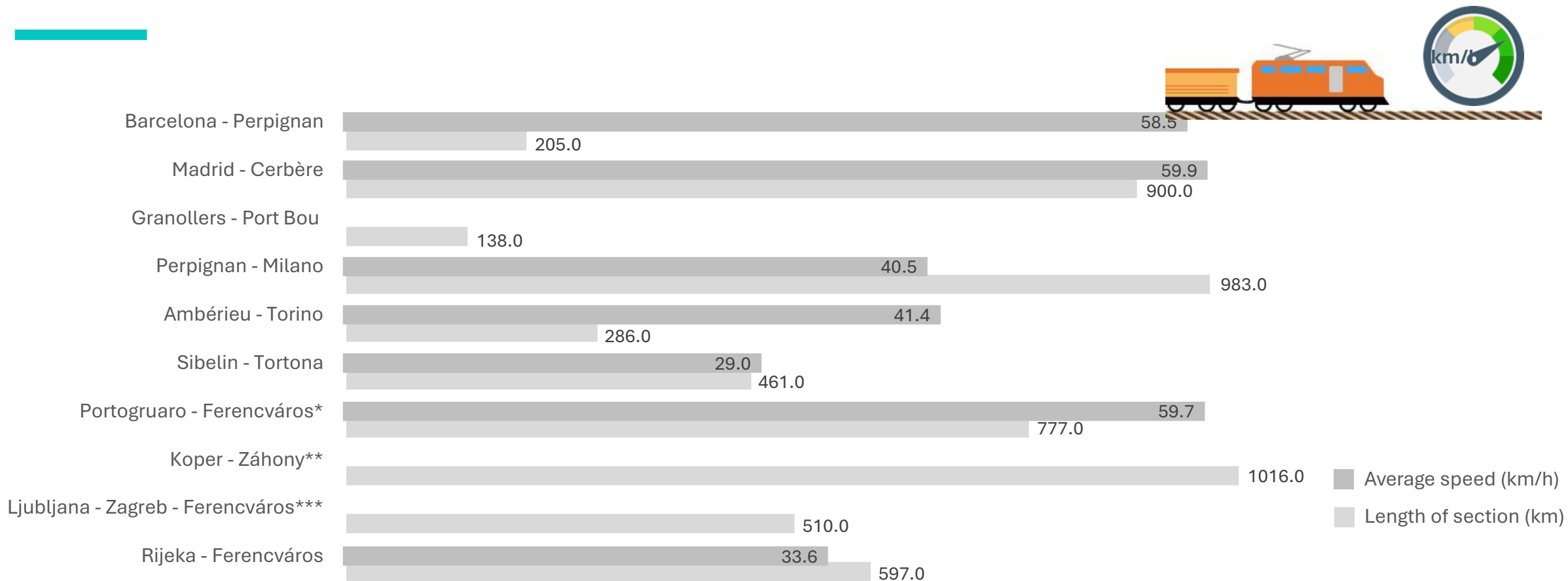
**This KPI should be perceived as qualitative as journey times might include commercial and operational stops.*

Average planned speed of PaPs for TT 2027 (calculation per O/D pairs)

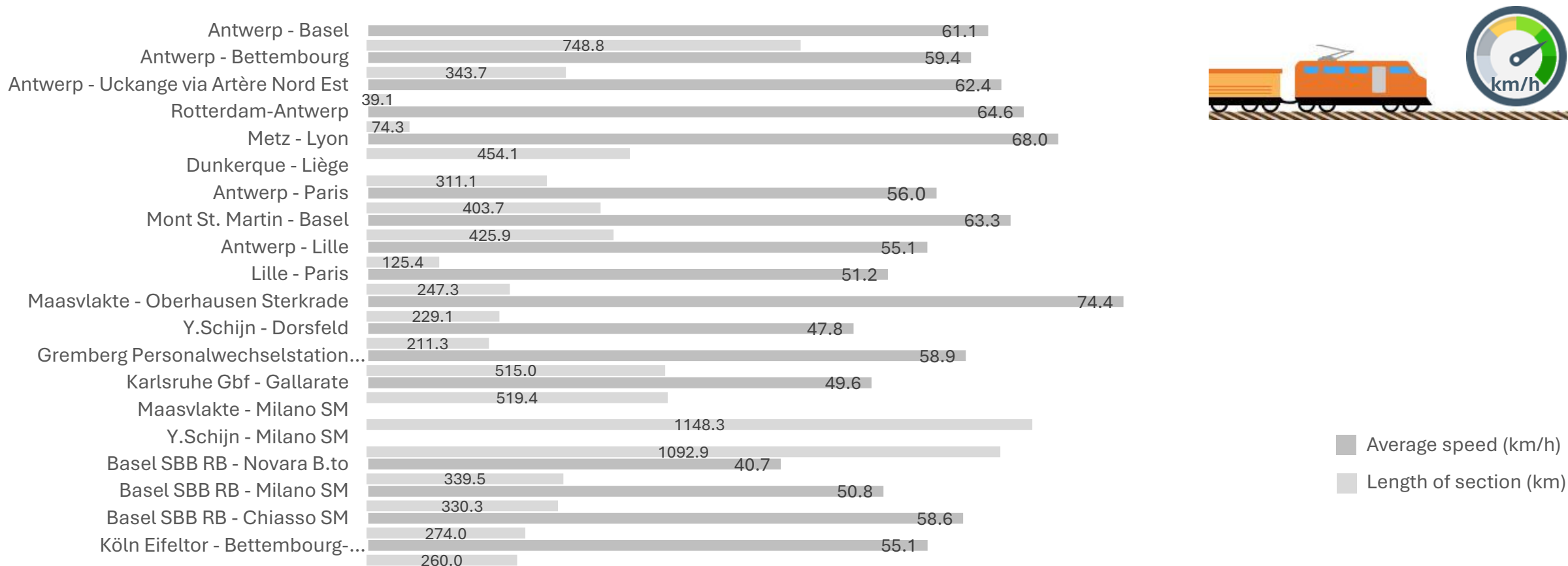


**This KPI should be perceived as qualitative as journey times might include commercial and operational stops.*

Average planned speed of PaPs for TT 2027 (calculation per O/D pairs)



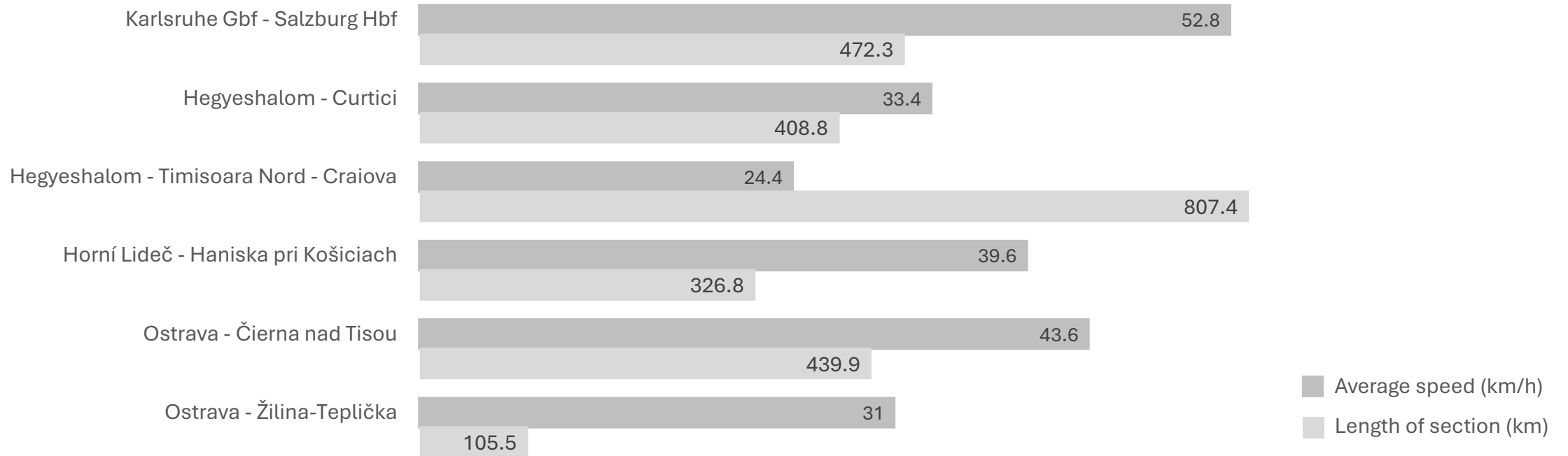
Average planned speed of PaPs for TT 2027 (calculation per O/D pairs)



*This KPI should be perceived as qualitative as journey times might include commercial and operational stops.

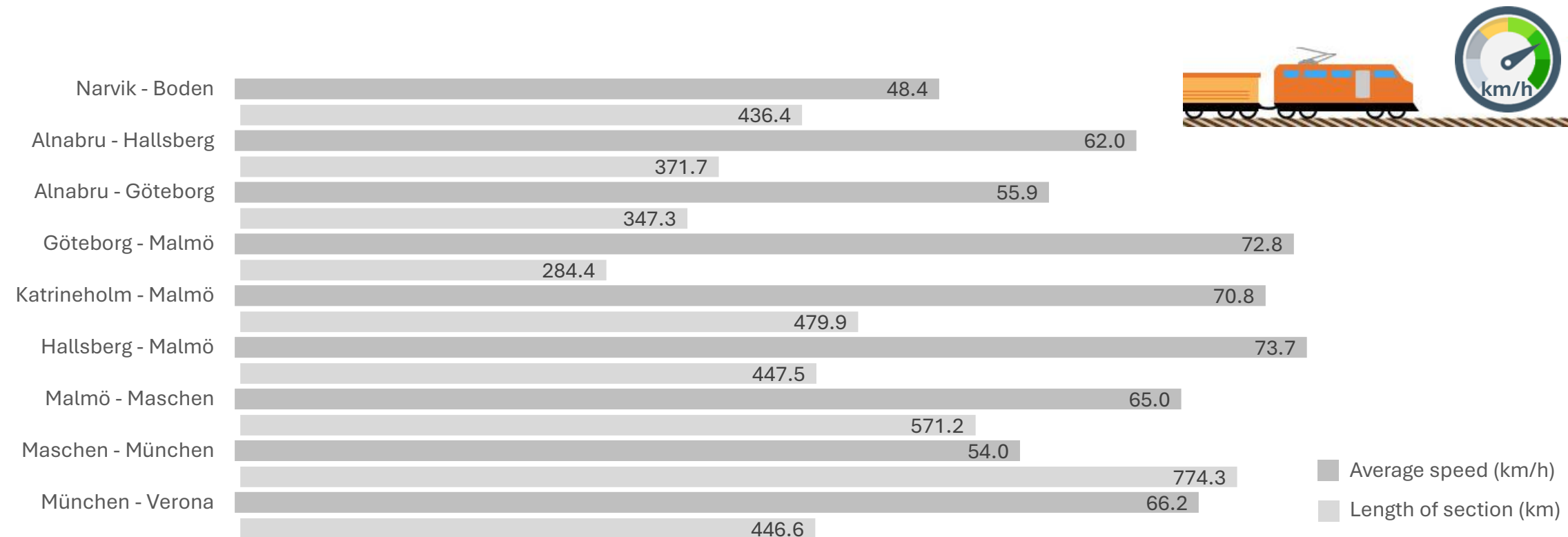
**Maasvlakte - Milano SM and Y.Schijn - Milano SM no PaPs

Average planned speed of PaPs for TT 2027 (calculation per O/D pairs)



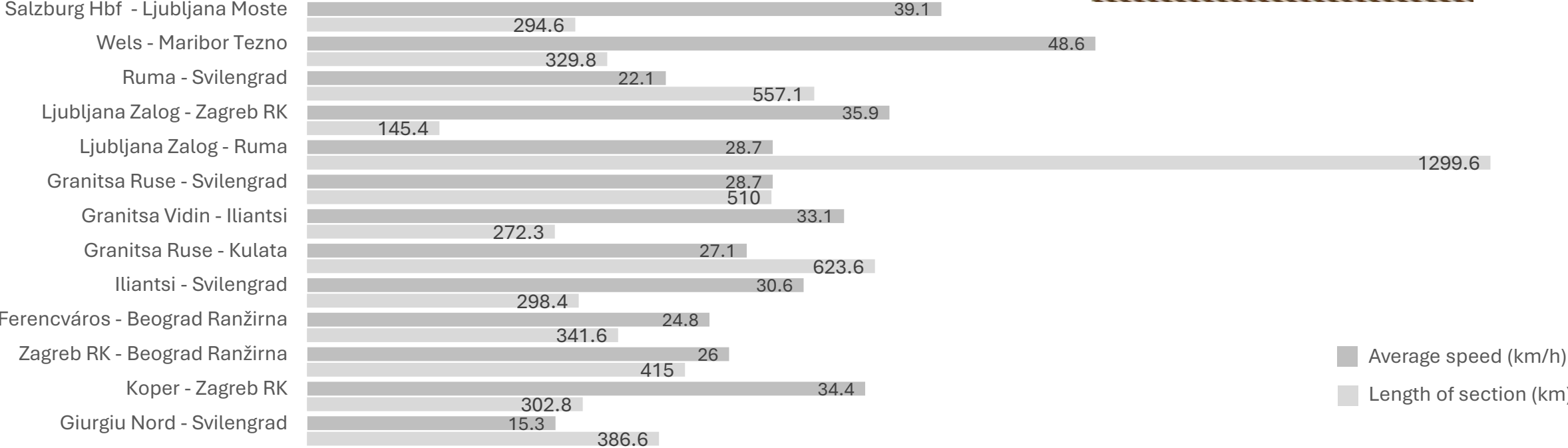
**This KPI should be perceived as qualitative as journey times might include commercial and operational stops.*

Average planned speed of PaPs for TT 2027 (calculation per O/D pairs)



**This KPI should be perceived as qualitative as journey times might include commercial and operational stops.*

Average planned speed of PaPs for TT 2027 (calculation per O/D pairs)

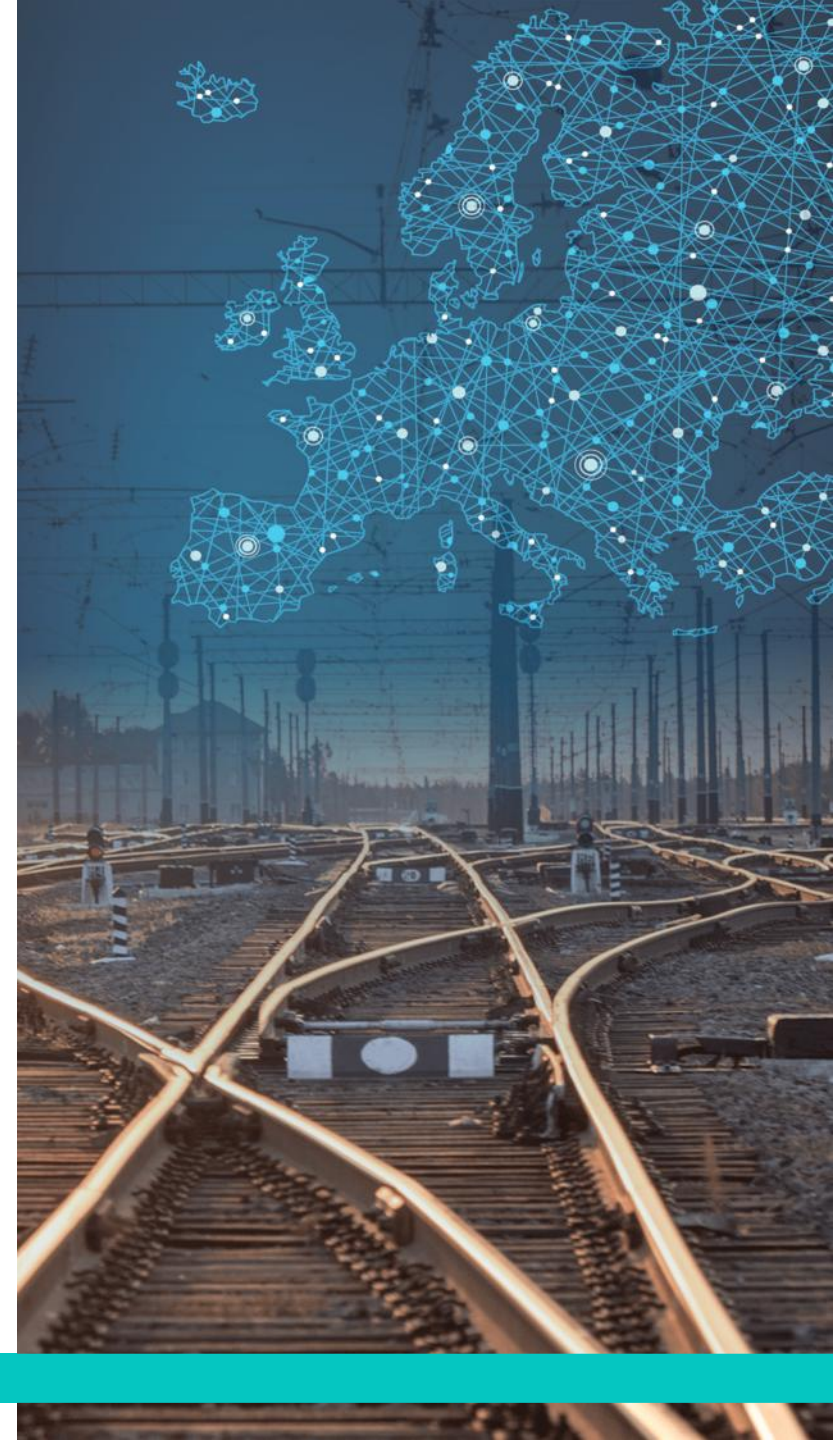


■ Average speed (km/h)
■ Length of section (km)

**Due to the transition phase and for legal reasons, the corridor may also use its original designation (RFC Alpine - Western Balkan).*

CORRIDOR MANAGEMENT

02 OPERATION / MARKET DEVELOPMENT for 2025 – END OF JUNE AVAILABLE



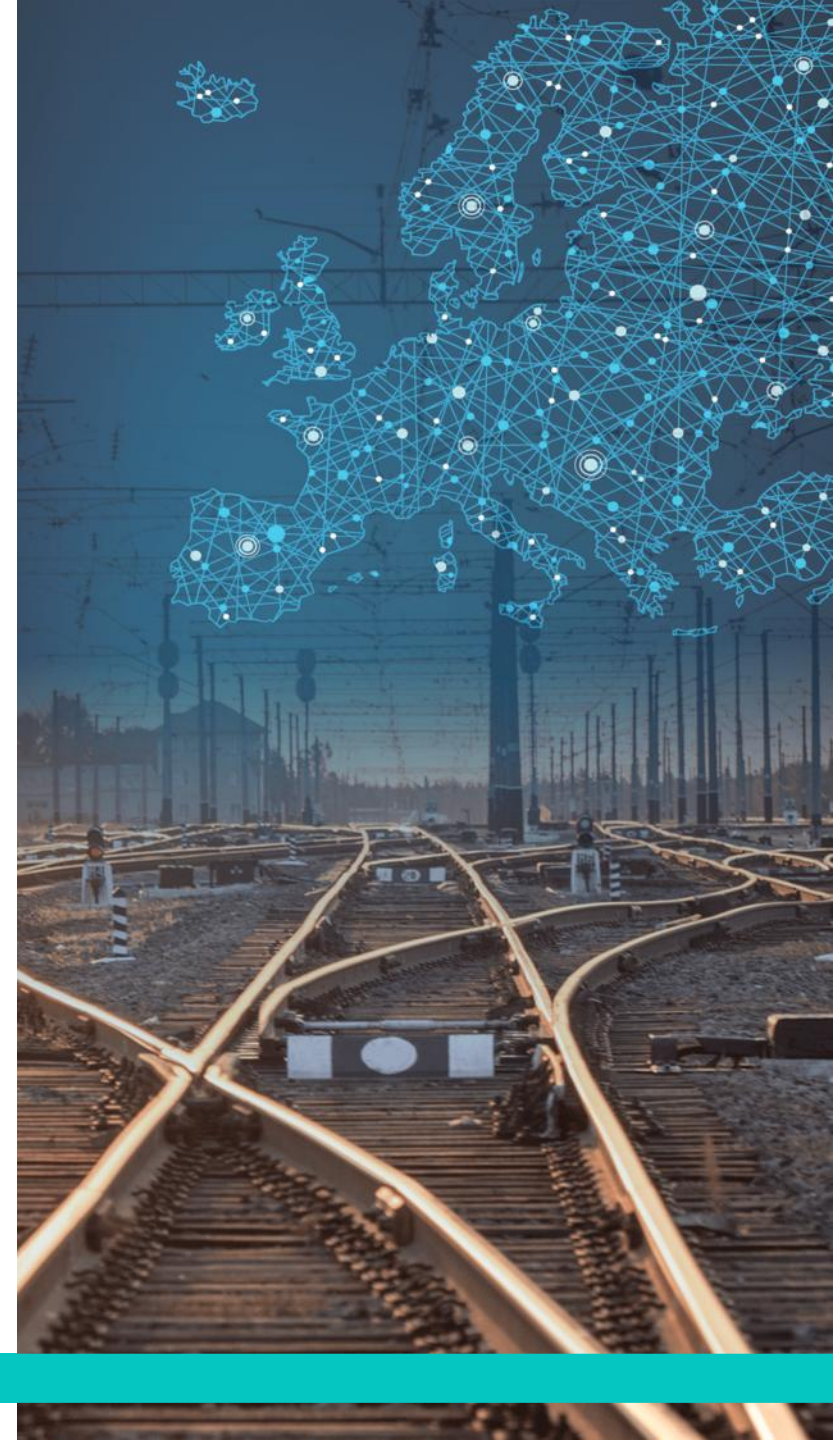
GENERAL UPDATE – TIMELINES COLLECTION OF THE KPIS

Timelines collection of the figures:

- **By the end of April 2026: Operation Business Area (TIS figures or national figures)**
 - Punctuality at origin 2025
 - Punctuality at destination 2025
 - Number of trains per RFC 2025
 - Train kilometres of trains per RFC 2025
 - Dwell times in border sections (planned and clean/real) 2025 – NEW Train Definition and old RFC alignment
- **Market Development**
 - Number of trains per border 2025
 - Train kilometres of trains per border 2025
 - Number of trains crossing a border along the RFC 2025
 - Train Kilometers of trains crossing a border along the RFC 2025

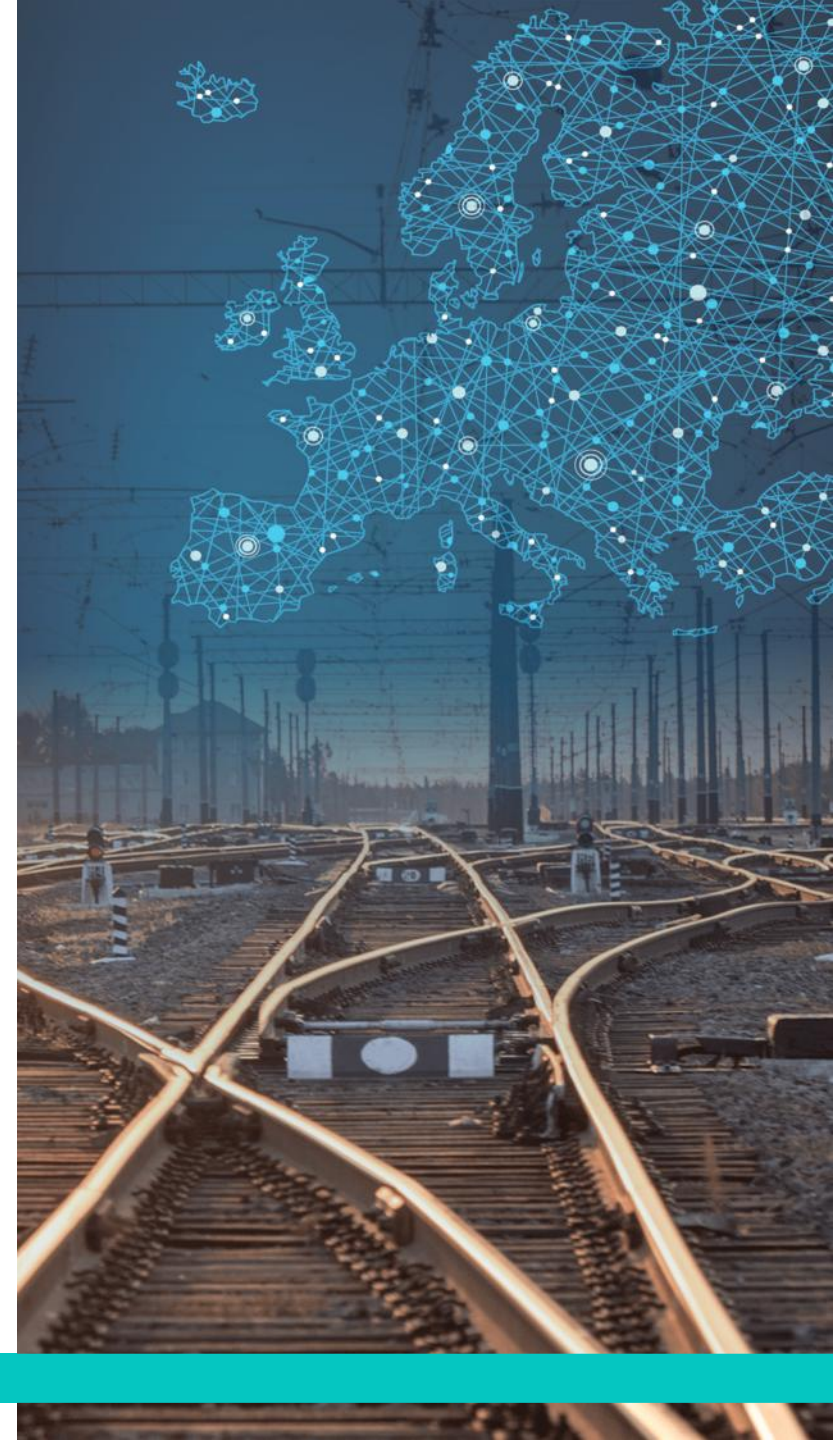
CORRIDOR MANAGEMENT

03 MARKET DEVELOPMENT for 2025 – END OF JUNE AVAILABLE



CORRIDOR MANAGEMENT

04 Ratio of capacity allocated by C-OSS for TT2026



Allocated by C-OSS for TT2026

Location Code	Between member states		Between operational points		RFC(s) Involved	RFC Line Category	Allocated by C-OSS 2025 (for TT2026)
EU00084	Belgium	France	Mouscron	Tourcoing	RFC 2 North Sea-Mediterranean	Principal	49.0%
EU00085	Belgium	France	Blandain	Baisieux	RFC 2 North Sea-Mediterranean	Principal	33.0%
EU00087	Belgium	France	Erquelinnes	Jeumont	RFC 2 North Sea-Mediterranean	Principal	70.0%
	Belgium	France	Quévy	Feignies	RFC 2 North Sea-Mediterranean	Diversiory	76.0%
EU00088	Belgium	France	Aubange	Longwy (Mont-St-Martin)	RFC 2 North Sea-Mediterranean	Principal	62.0%
EU00090	Netherlands	Belgium	Roosendaal	Essen	RFC 2 North Sea-Mediterranean	Principal	45.0%
EU00094	Netherlands	Belgium	Sas van Gent	Zelzate	RFC 2 North Sea-Mediterranean	Connecting	0.0
EU00096	Belgium	Luxembourg	Autelbas	Kleinbettingen	RFC 2 North Sea-Mediterranean	Diversiory	0.0
EU00097	Belgium	Luxembourg	Aubange	Pétange (Rodange)	RFC 2 North Sea-Mediterranean	Principal	100.0%
EU00098	Belgium	Luxembourg	Athus	Pétange	RFC 2 North Sea-Mediterranean	Connecting	0.0
EU00099	Luxembourg	France	Pétange	Mont-St-Martin	RFC 2 North Sea-Mediterranean	Diversiory	0.0
EU00102	Luxembourg	France	Bettembourg	Thionville (Zoufftgen)	RFC 2 North Sea-Mediterranean	Principal	98.0%
EU00130	France	Switzerland	Pougny-Chancy	La Plaine	RFC 2 North Sea-Mediterranean	Principal	75.0%
EU00138	France	Switzerland	Saint-Louis	Basel St. Johann	RFC 2 North Sea-Mediterranean	Principal	78.0%

*Border-crossings involving third countries, that are not members of the RFC. Since the C-OSS does not allocate capacity for these borders, they shall be taken out from the published KPI.

Ratio of capacity allocated by C-OSS for TT2026

Allocated by C-OSS for TT2026

Location Code	Between member states		Between operational points		RFC(s) Involved	RFC Line Category	Allocated by C-OSS 2025 (for TT2026)
EU00032	Germany	Austria	Kiefersfelden	Kufstein	RFC 3 ScanMed	Principal	1.4%
EU00059	Denmark	Germany	Padborg	Flensburg Friedensweg	RFC 3 ScanMed	Principal	53.0%
EU00115	Austria	Italy	Steinach in Tirol	Brennero	RFC 3 ScanMed	Principal	0.9%
EU00141	Denmark	Sweden	Peberholm	Lernacken	RFC 3 ScanMed	Principal	61.7%
EU00234	Norway	Sweden	Kornsjø	Mon	RFC 3 ScanMed	Principal	0.0%

*Border-crossings involving third countries, that are not members of the RFC. Since the C-OSS does not allocate capacity for these borders, they shall be taken out from the published KPI.

Ratio of capacity allocated by C-OSS for TT2026

Allocated by C-OSS for TT2026

Location Code	Between member states		Between operational points		RFC(s) Involved	RFC Line Category	Allocated by C-OSS 2025 (for TT2026)
EU00063	Czechia	Austria	Břeclav	Bernhardsthal	RFC 5 Baltic-Adriatic	Principal	0.0%
EU00069	Poland	Czechia	Międzylesie	Lichkov	RFC 5 Baltic-Adriatic	Diversionary	0.0%
EU00073	Poland	Czechia	Chałupki	Bohumín	RFC 5 Baltic-Adriatic	Principal	4,09%
EU00074	Poland	Czechia	Zebrzydowice	Petrovice u Karviné	RFC 5 Baltic-Adriatic	Principal	2,18%
EU00082	Czechia	Slovakia	Mosty u Jablunkova	Čadca	RFC 5 Baltic-Adriatic	Principal	0.0%
EU00109	Austria	Slovakia	Kittsee	Bratislava-Petržalka	RFC 5 Baltic-Adriatic	Principal	7,01%
EU00110	Austria	Slovakia	Marchegg	Devínska Nová Ves	RFC 5 Baltic-Adriatic	Principal	0.0%
EU00113	Austria	Slovenia	Spielfeld-Straß	Šentilj	RFC 5 Baltic-Adriatic	Principal	9,09% (RFC BA) 4,8% (RFC AWB) Combined 13,89%
EU00116	Austria	Italy	Thörl-Maglern	Tarvisio Boscoverde	RFC 5 Baltic-Adriatic	Principal	6,42%
EU00151	Italy	Slovenia	Villa Opicina	Sežana	RFC 5 Baltic-Adriatic	Principal	0.0%
EU00158	Poland	Slovakia	Zwardoń	Skalité	RFC 5 Baltic-Adriatic	Principal	0.0%

*Border-crossings involving third countries, that are not members of the RFC. Since the C-OSS does not allocate capacity for these borders, they shall be taken out from the published KPI.

Ratio of capacity allocated by C-OSS for TT2026

Allocated by C-OSS for TT2026

Location Code	Between member states		Between operational points		RFC(s) Involved	RFC Line Category	Allocated by C-OSS 2025 (for TT2026)
EU00120	France	Spain	Cerbère	PortBou	RFC 6 Mediterranean	Principal	11,8%
EU00121	France	Spain	SNCF Réseau/LFP	Límite LFP/ADIF	RFC 6 Mediterranean	Principal	14,9%
EU00127	France	Italy	Modane	Bardonecchia	RFC 6 Mediterranean	Principal	89,7%
EU00151	Italy	Slovenia	Villa Opicina	Sežana	RFC 6 Mediterranean	Principal	4,9%
EU00185	Slovenia	Hungary	Hodoš	Őriszentpéter	RFC 6 Mediterranean	Principal	63.6%
EU00192*	Hungary	Ukraine	Záhony	Chop	RFC 6 Mediterranean	Principal	
EU00201	Croatia	Hungary	Botovo	Gyékényes	RFC 6 Mediterranean	Principal	6,7%
EU00216	Slovenia	Croatia	Dobova	Savski Marof	RFC 6 Mediterranean	Principal	8,70% (MED RFC) 2,5% (AWB RFC) Combined 11.2%

*Border-crossings involving third countries, that are not members of the RFC. Since the C-OSS does not allocate capacity for these borders, they shall be taken out from the published KPI.

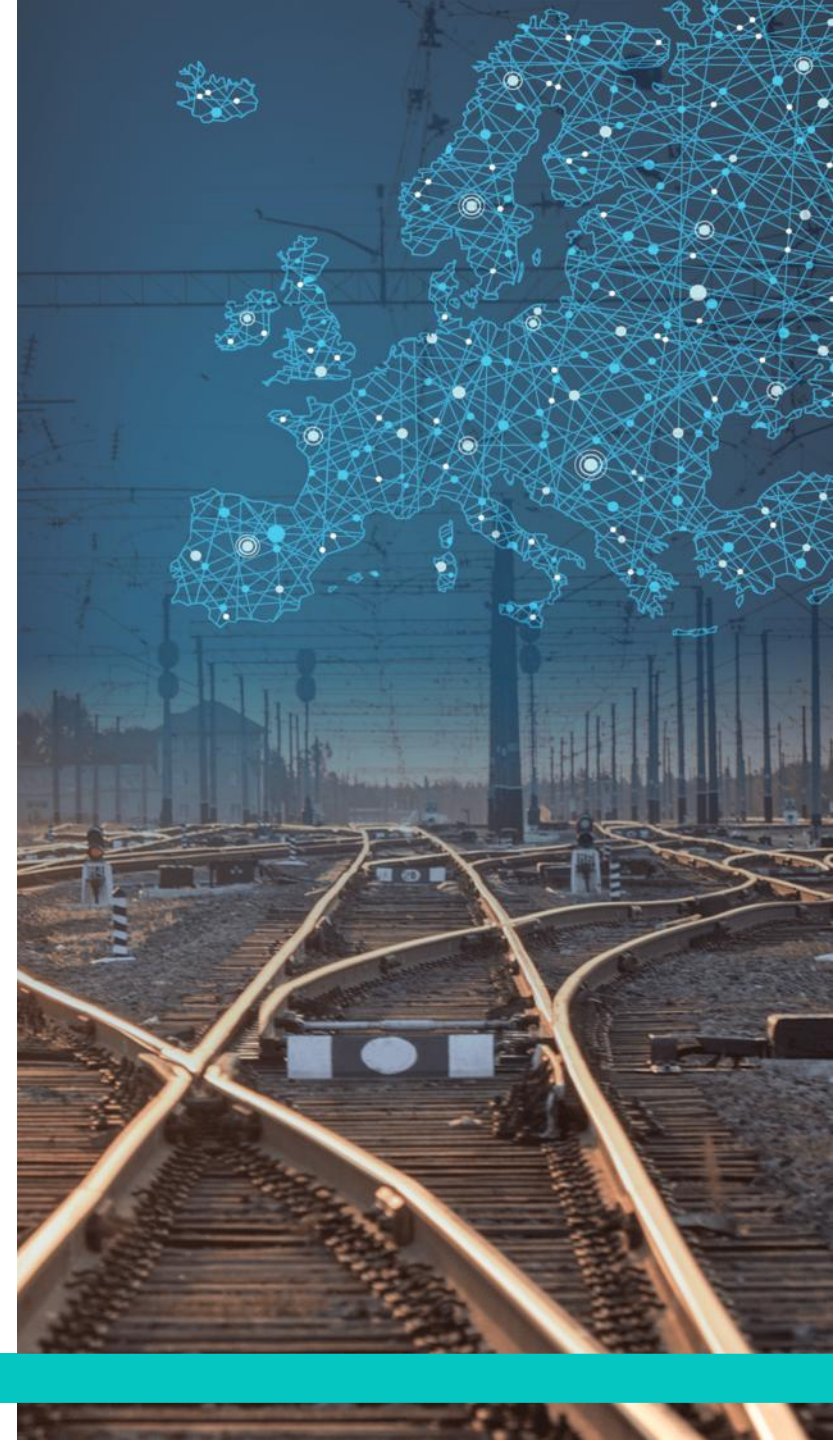
Ratio of capacity allocated by C-OSS for TT2026

Allocated by C-OSS for TT2026

Location Code	Between member states		Between operational points		RFC(s) Involved	RFC Line Category	Allocated by C-OSS 2025 (for TT2026)
EU00112	Austria	Slovenia	Rosenbach	Jesenice	RFC 10 Alpine-Western Balkan	Principal	5,0%
EU00113	Austria	Slovenia	Spielfeld-Straß	Šentilj	RFC 10 Alpine-Western Balkan	Principal	9,09% (RFC BA)
EU00211	Serbia	Bulgaria	Dimitrovgrad	Kalotina Zapad	RFC 10 Alpine-Western Balkan	Principal	
EU00212*	<i>Bulgaria</i>	<i>Turkey</i>	<i>Svilengrad</i>	<i>Kapikule</i>	<i>RFC 10 Alpine-Western Balkan</i>	<i>Principal</i>	
EU00216	Slovenia	Croatia	Dobova	Savski Marof	RFC 10 Alpine-Western Balkan	Principal	8,70% (MED RFC)
EU00226	Croatia	Serbia	Tovarnik	Šid	RFC 10 Alpine-Western Balkan	Principal	1,2%

CORRIDOR MANAGEMENT

05 DISCLAIMER



Disclaimer

- The KPIs reflect the performance of each individual RFC, therefore, when comparing the figures of various RFCs, the specificities of each one have to be considered. Each RFC may apply any additional KPIs, which are published in their annual reports on their websites and/or in the [Customer Information Platform](#) (CIP), where applicable.
- Please refer to the annual reports of individual RFCs for comprehensive information concerning the figures and their analysis. In addition, you can find the description of each commonly applicable KPI in the RNE '[Guidelines for Key Performance Indicators of Rail Freight Corridors](#)'.

Contact



Akrivi Gkampoura

Legal & Sales Manager

+43 676 971 31 79

akrivi.gkampoura@rne.eu

RailNetEurope
Austria Campus 3
Jakov-Lind-Straße 5
1020 Vienna, Austria
www.rne.eu