

# PRESS INFORMATION: INTRODUCING RNE

(date of publication: 21.02.2025)

---

## 1 Boiler Plate/Company Description

### About RailNetEurope (RNE)

RailNetEurope (RNE) is a Vienna-based association established in 2004 to facilitate international rail traffic. Representing 38 Full Members (Infrastructure Managers and Allocation Bodies) and 11 Associate Members (Rail Freight Corridors), RNE supports its members in Capacity and Traffic Management, Corridor Coordination, IT, and Legal & Sales Matters.

RNE collaborates closely with European and international railway stakeholders and works in alignment with EU regulations. It receives funding from the European Commission and actively contributes to initiatives such as the PRIME Platform and Europe's Rail.

For more information, visit the [RNE website](#).

---

## 2 Full length Press Information

### 2.1 Facilitating International Rail Traffic Across Europe Since 2004

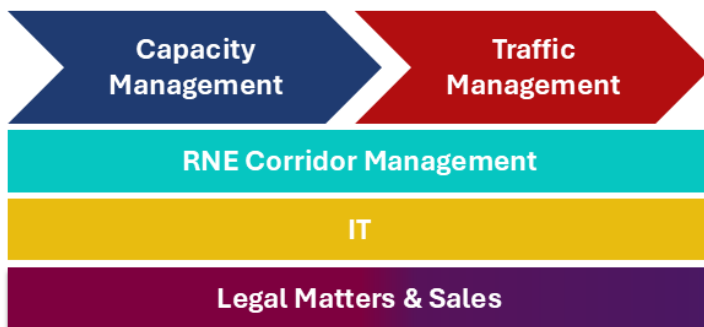
[RailNetEurope \(RNE\)](#) was established as an association with its headquarters in Vienna in 2004 by several European railway Infrastructure Managers (IMs) to create a common, Europe-wide organisation for facilitating international rail business.

As an umbrella association, RNE has 38 [Full Members](#), IMs and Allocation Bodies (ABs), from over 30 European countries and 11 [Associate Members](#) (Rail Freight Corridors), with a combined rail network exceeding 230,000 kilometres.



**RNE member states (in green)**

RNE supports its members in the areas of Capacity Management, Traffic Management, Corridor Management, IT and Sales & Legal Matters by providing solutions that benefit all Members, their customers and business partners. RNE's role includes facilitating compliance with the European legal framework by developing harmonised international business processes, templates, handbooks, and guidelines.



**RNE's core business areas**

## 2.2 Mission

RNE's mission is to help its members meet the challenges of the rapidly changing railway sector in Europe and to facilitate European transport on rail infrastructure.

## 2.3 Structure

RailNetEurope has adopted the typical structure of an international organisation. At least twice a year, the RNE General Assembly takes decisions. These are prepared by a [Managing Board](#) composed of Members from various European countries, which meets regularly and supervises the work of all RNE ad hoc and standing groups (Working Groups, Task Forces, etc.).



**The RNE Managing Board (from left to right):**

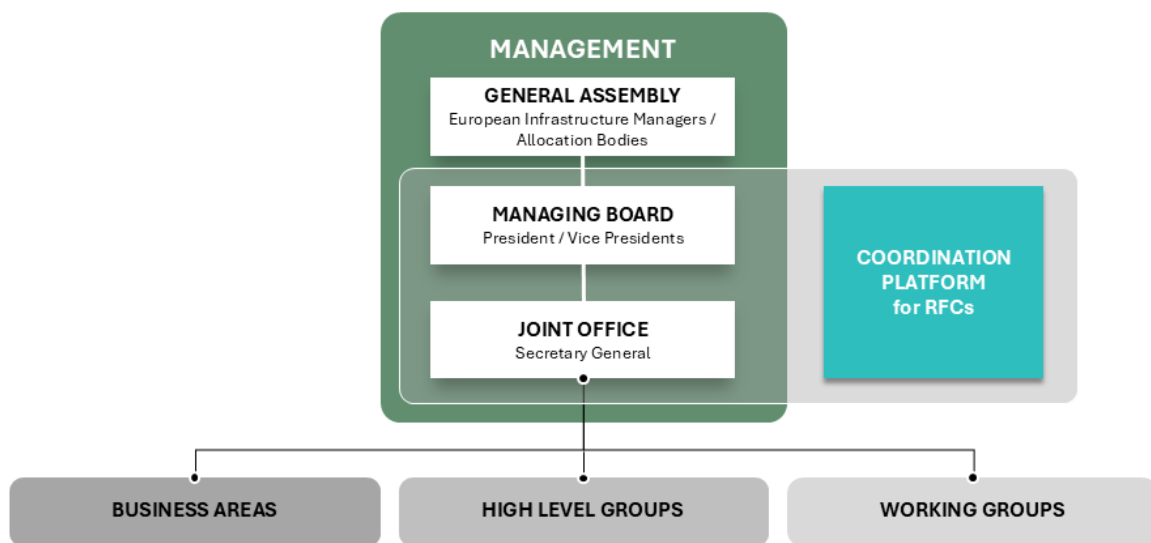
**Stefano Castro, Michel Geubelle, Harald Reisinger, Guus de Mol, Paul Mazataud, Péter Rónai (until 30 June 2024), Linda Thulin, Mirosław Kanclerz, Alfred Pitnik, Stephan Schenk, Joachim Kroll and Oliver Sellnick.**

In addition to the Working Groups, High Level Groups (HLGs) in the areas of Rail Freight Corridors, IT, Capacity Management and Traffic Management provide strategic input, propose projects and stimulate the implementation of project results.

As an umbrella organisation, most of RNE’s work takes place through standing Working Groups and Project Teams, which are divided into the following business areas:

- [Capacity Management](#)
- [Traffic Management](#)
- [Corridor Management](#)
- [IT](#)
- [Legal Matters & Sales](#)

The daily activities of these groups are coordinated and managed at the [RNE Joint Office in Vienna](#), which also handles the administration, finances and communication of the Association.



**Organisational structure of RNE**

## 2.4 Partnerships & Funding

RNE liaises with other European/international bodies – such as [ALLRAIL](#), [CER](#), [CIT](#), [EIM](#), [ERFA](#), [FTE](#), [IRG-Rail/ENRRB](#), [OTIF](#), [RFF](#), [UIC](#) and [UIRR](#) – to build agreement on issues of common interest. In particular, RNE collaborates closely with the [European Railway Agency \(ERA\)](#) in the field of [Telematics TSIs](#) (Technical Specifications for Interoperability) and [Europe’s Rail](#).

Over the years, the European Commission has recognised and supported these activities, providing European Union funding through [CINEA \(European Climate Infrastructure and Environment Executive Agency\)](#).

Additionally, RNE participates as an Observer within the [SERAF](#), which enhances dialogue between the European Commission, the Member States, the Infrastructure Managers and the relevant rail stakeholders. RNE has also an Observer role within the PRIME and co-chairs the [PRIME Digital Subgroup](#) together with the European Commission ([DG MOVE](#)).